



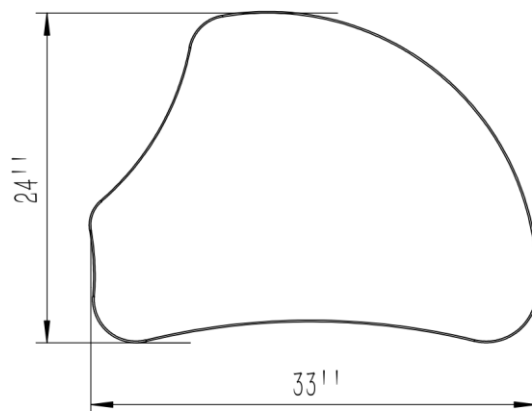
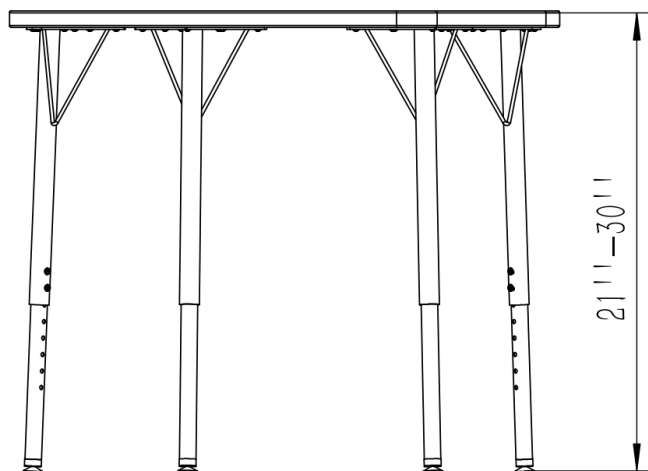
## Harmon desk ASD009 Specification

### Features

- Harmon unique shaped collaborative top allows for single-student use or grouping of multiple desks in various arrangements. A student desk with a 24" x 32" top with book box and casters.
- Optional youth height leg insert lowers the adjustment by six inches to 15" to 24" to accommodate early childhood users and alternative seating choices.
- Group tables together in a multitude of ways to fit your classroom needs. Provides flexibility and workspace comfort for left- or right-hand seating.

### Top

- Desktops with T-molded edge are made by 1 1/4" particle board core with high-pressure laminate top or markerboard top
- Desktops with LockEdge are made by 3/4" / 1" MDF core with high pressure laminate top or markerboard top.
- LockEdge polyurethane coating is sprayed directly on to table edge surfaces, creating a permanent seal that is impervious to bacteria and moisture for easier maintenance and long-lasting durability.



## Harmon desk ASD009 Specification

Model	Size	H
ASD009TR-2433	24" x 33"	21"-30"
ASD009TRPB-2433	24" x 33"	21"-30"
ASD009TRWB-2433	24" x 33"	21"-30"
ASD009TRGRT-2433	24" x 33"	21"-30"
ASD009FR-2433	24" x 33"	21"-30"
ASD009FRPB-2433	24" x 33"	21"-30"
ASD009FRWB-2433	24" x 33"	21"-30"
ASD009FRGRT-2433	24" x 33"	21"-30"
ASD009SE-2433	24" x 33"	21"-30"
ASD009SEPB-2433	24" x 33"	21"-30"
ASD009SEWB-2433	24" x 33"	21"-30"
ASD009SEGRT-2433	24" x 33"	21"-30"



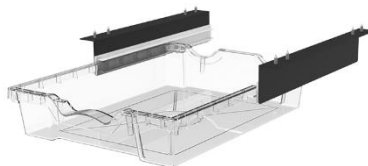
### Options



**Wire basket(WB)**  
20" x 14" x 4"

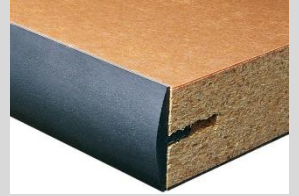


**Book box(PB)**  
21" x 14" x 4"



**Guide rail tray(GRT)**  
16" x 12" x 3"

## Features



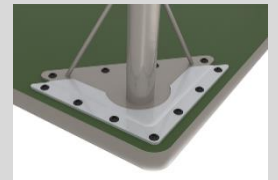
T-molded Edge Band is Spot-Nailed to prevent it From Pulling Away from the Edge



Extra-Durable LockEdge Coating is Sprayed on. Creating a Permanent Seal that is Impervious to Bacteria and Moisture



Standard: Pre-drilled holes and metal insert nut prepared



Option: Quick Connect Bracket



Option: 2 1/2" wheel with brake

## Harmon desk ASD009 Specification

### ACC081 Series adjustable

- Black upper, chrome lower
- 11 gauge triangle plate
- 1 1/4" tubing, 16 gauge upper
- 1" tubing, 16 gauge insert
- Nylon swivel glide.

### ACC086 Series adjustable

- Black upper, chrome lower
- 11 gauge triangle plate
- 2" tubing, 16 gauge upper
- 1 4/5" tubing, 16 gauge insert
- Nylon glide.

### ACC084 Series adjustable(Oval)

- Black upper, chrome lower
- 11 gauge triangle plate
- 1.5" x 2.6". tubing, 16 gauge upper
- 1.4" x 2.4". tubing, 16 gauge insert
- Nylon glide.

### Height arrange

- ACC081ST: 20"-29", 1 increments
- ACC081K: 15"-24", low range
- ACC086ST: 20"-29", 1 increments
- ACC086K: 15"-24", low range
- ACC084: 24"-34", 1 increments



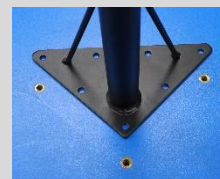
## Features



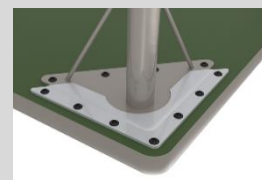
T-molded Edge Band is Spot-Nailed to prevent it From Pulling Away from the Edge



Extra-Durable LockEdge Coating is Sprayed on. Creating a Permanent Seal that is Impervious to Bacteria and Moisture



Standard: Pre-drilled holes and metal insert nut prepared



Option: Quick Connect Bracket



Option: 2 1/2" wheel with brake

## Harmon desk ASD009 Specification

