



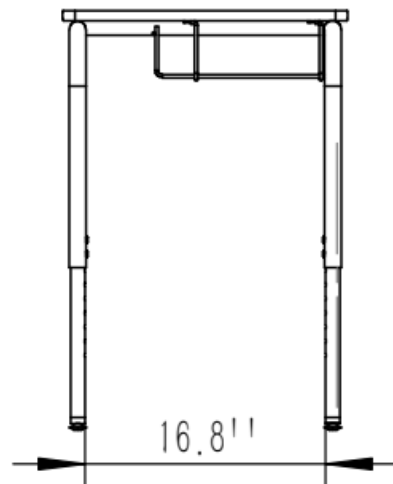
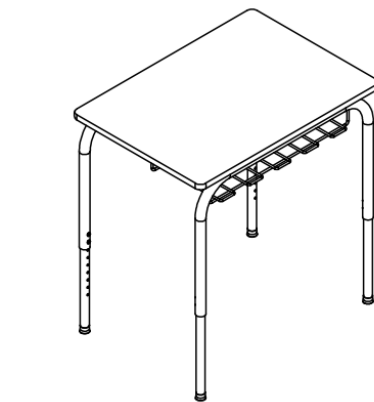
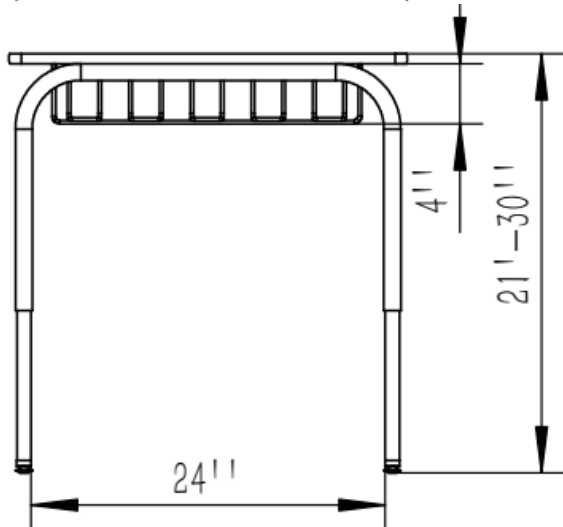
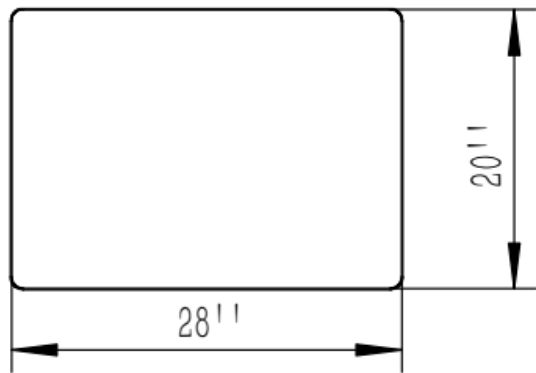
Open front desk ASFD035 Specification

Features

- Work surface to be made of 5/8" Solid Plastic consisting of wood flour and resin with binder component to assure a hard, smooth, stain resistant surface, or 5/8" fiberboard 47lb core, high pressure laminate surface with a phenolic backer sheet. Fiberboard top. The bookbox is formed of nickel chromed 5/16" diameter solid steel rods. Book Box measures 18"x14"x4" and is MIG welded to the frame for positive attachment

Top

- Desktops with T-molded edge are made by 1 1/4" particle board core with high-pressure laminate top or markerboard top
- Desktops with LockEdge are made by 3/4" / 1" MDF core with high pressure laminate top or markerboard top.
- LockEdge polyurethane coating is sprayed directly on to table edge surfaces, creating a permanent seal that is impervious to bacteria and moisture for easier maintenance and long-lasting durability.



School desk

Open front desk ASFD035 Specification

Model	Size	H
ASFD011-2028	20" x 28"	21"-30"
ASFD011WB-2028	20" x 28"	21"-30"
ASFD011GRT-2028	20" x 28"	21"-30"
ASFD011PB-2028	20" x 28"	21"-30"

Legs

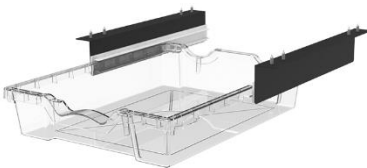
- The FRAME is attached to the pre-drilled holes in the top with #10 x 5/8" screws through a 1.2" 16-gauge square tube . The frame is made by 1.2"16 gauge tube and 1" 16-gauge insert tube and adjust in height from 21" to 30" in 1" increments. The adjustment for each leg is secured with 3 3/4" -16 x .675" Allen screws. The legs are tied together for added strength with a 1.6" x 1" 18-gauge square tube and Connector Bolts. Legs have 1" adjusting leveling glides.



Options

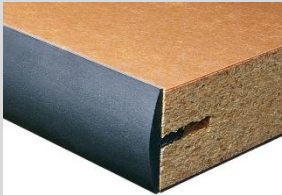


Wire basket(WB)
20" x 14" x 4"



Guide rail tray(GRT)
16" x 12" x 3"

Features



T-molded Edge Band is Spot-Nailed to prevent it From Pulling Away from the Edge



Extra-Durable LockEdge Coating is Sprayed on. Creating a Permanent Seal that is Impervious to Bacteria and Moisture



Option: 2 '' wheel with brake